

AnisView – Installation

This document provides installation instructions for AnisView, an educational software package to visualize the Bidirectional Reflectance Distribution Function (BRDF).

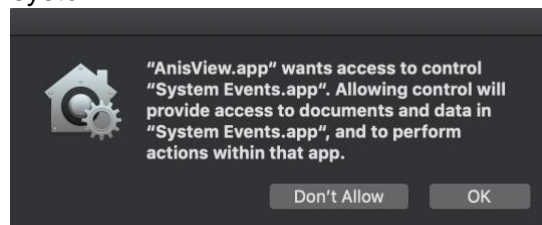
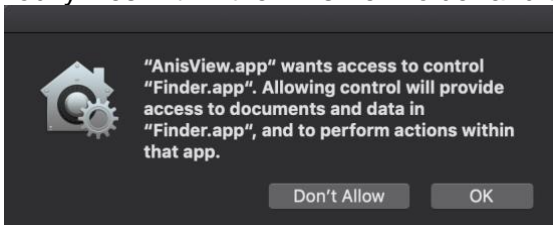
The software is available for Linux (64bit), macOS, and Microsoft Windows (32/64bit) at: <https://forest.jrc.ec.europa.eu/en/activities/lpa/anisview/>.

AnisView is completely self-contained and fully functional in its own directory. It can be installed or copied to any directory on your system or any external device.

macOS:

- 1) Delete any previous folder */Applications/AnisView*, or move it to a temporary place from where it can be restored in case of problems with the new installation. Empty the Trash.
- 2) Download the installer *AnisView <version>_macOS.dmg* to a local directory.
- 3) Ensure to have the latest version of Xquartz installed. If XQuartz has previously been installed, launch it and click on the XQuartz menu (top left corner of the screen), select the second option: "Check for X11 updates..." and follow the instructions from there. If this package has never been installed before, use a web browser to visit the site <https://www.xquartz.org> and download it from there. After the Xquartz installation, reboot your Mac.
- 4) Double-click the AnisView installer or right-click on it and select: Open with → DiskImageMounter. Agree with the copyright conditions, then in the new popup window drag/drop *AnisView* to the folder *Applications* within that window. After the installation, unmount the *AnisView Installer* image.
- 5) Open the directory */Applications/AnisView* and double-click *AnisView.app* to start the application. If you get a message saying that AnisView.app is from an unidentified developer click on OK, or Open, or Open Anyway. On macOS 11 (Big Sur), right-click on *startAV.command* and select Open.

New security features in macOS 10.14 (Mojave) or later require your permission for AnisView to modify files within the AnisView folder and the system:



You **must** click on **OK** to grant these permissions. If you accidentally clicked on *Don't Allow* AnisView will no longer start. You can then reset the permissions by opening a Terminal and enter the command: `tccutil reset AppleEvents; tccutil reset SystemPolicyAllFiles`

Microsoft-Windows:

- 1) Download *AnisView <version>_windows.exe* to a local directory.
- 2) Install AnisView to its default location *C:\AnisView*. **The installation can be performed without administrator rights**. If writing to the C-drive is not allowed the user can choose a different directory and the installer will setup a **standalone directory** '*AnisView<version>*'. The standalone version has the same functionality as the default installation but it will not provide any system integration, such as desktop shortcuts, menu entries or an uninstaller.
- 3) Start AnisView with a double-click on the desktop launcher, or from the start menu (*Start → AnisView → AnisView*), or double-click the launcher *startAnisView* in the directory *AnisView*.

Note:

- You can copy the installed directory **AnisView** to a USB-stick and then start the application with a double-click on **start AnisView** in the **AnisView** directory.
- **AnisView** has been successfully tested on Microsoft Windows XP to 10 (32/64bit).

Linux:

A) System-wide installation:

AnisView can be installed for system-wide usage and made available to all users using one of the following options:

- **PCLinuxOS:** Open Synaptic and search for/install **AnisView**
- **Fedora:** Download the package **AnisView-<version>Fedora.x86_64.rpm** to a local directory. From a root-terminal enter the command: **yum install <full path to the downloaded AnisView-<version>Fedora.x86_64.rpm>**
- **Suse Leap:** Download the package **AnisView -<version>SuseLeap.x86_64.rpm** to a local directory. From a root-terminal enter the command: **zypper install --allow-unsigned-rpm <full path to the downloaded AnisView -<version>SuseLeap.x86_64.rpm>** (you may have to install other listed dependencies first)
- ***buntu:** Download the package **anisview_<version>_amd64.deb** to a local directory. From a root-terminal enter the command: **apt install <full path to the downloaded anisview_<version>_amd64.deb>**
- **Other Linux distributions:** One of the above-mentioned rpm or deb-packages may work, if not use the standalone version outlined in the following section.

B) Standalone installation (as normal user, not as root!):

- 1) Download the file **AnisView<version>_linux64.run** to your \$HOME directory, i.e., **/home/peter/**
- 2) Open a terminal (konsole, xterm) in this directory and make the installer executable using the command: **chmod u+x AnisView <version>_linux64.run**
- 3) Start the installer with the command: **./ AnisView <version>_linux64.run** and follow the instructions. The installer extracts the directory **AnisView** and creates the desktop launcher **AnisView**.
- 4) Start AnisView in one of the following 3 ways:
 - double-click the shortcut **AnisView** on your desktop, or
 - in the directory **AnisView**, double-click on **makeLaunchers.sh** then move the shortcut **AnisView** on your desktop and double-click it, or
 - open a terminal in the directory **AnisView** and enter the command: **./startAnisView.sh**

Note:

- If you change the path/location of the **AnisView** directory (for example when running from a USB-flashdrive or external USB-disk) you can start the program in the **AnisView** directory using the command **./startAnisView.sh**. Alternatively, you can re-create the desktop-launchers for the new location of this directory with the command **./makeLaunchers.sh** and then copy the **AnisView.desktop** file to your desktop and double-click it to start the program.
- **AnisView** has been successfully tested on the following 64bit Linux distributions: Arch, CentOS, Debian, Fedora, (K)Ubuntu, Mageia, Manjaro, Mint, OpenSuSE, PCLinuxOS, RedHat.

For best compatibility, please use the KDE desktop environment in PCLinuxOS.

For bug reports, comments, and suggestions please contact: Peter.Vogt@ec.europa.eu